



Solid State Devices, Inc.

14701 Firestone Blvd * La Mirada, Ca 90638
 Phone: (562) 404-4474 * Fax: (562) 404-1773
 ssdi@ssdi-power.com * www.ssdi-power.com

**SDA403A
 Thru
 SDA403G**

**6A, 50 thru 1000V
 STANDARD RECOVERY
 THREE PHASE
 BRIDGE RECTIFIER ASSEMBLY**

Designer's Data Sheet

Part Number/Ordering Information ^{1/}
 SDA403

$\overline{\quad}$ = Not Screened
 TX = TX Level
 TXV = TXV Level
 S = S Level

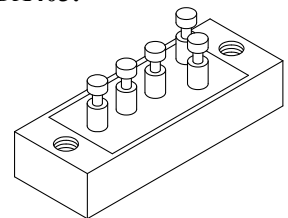
Family/Voltage

- A = 50V
- B = 100V
- C = 200V
- D = 400V
- E = 600V
- F = 800V
- G = 1000V

- Features:**
- Up to 1000V Blocking Voltage
 - Average Output Current 6 Amps
 - Low Reverse Leakage Current
 - Constructed with Void-Free, Hermetically Sealed Discretes
 - Aluminum Case for Maximum Thermal Conductivity
 - Electrically Insulated Aluminum Case
 - Fast and Ultra Fast Versions Available
 - TX, TXV, and S-Level Screening Available ^{2/}

Maximum Ratings ^{4/}	Symbol	Value	Units
Peak Repetitive Reverse Voltage And DC Blocking Voltage	SDA403A	50	Volts
	SDA403B	100	
	SDA403C	V_{RRM} 200	
	SDA403D	V_{RWM} 400	
	SDA403E	V_R 600	
	SDA403F	800	
	SDA403G	1000	
Average Rectified Forward Current (Resistive Load, 60 Hz Sine Wave, $T_C = 55^\circ C$)	I_o	6	Amps
Peak Surge Current (8.3 ms Pulse, Half Sine Wave, $T_A = 25^\circ C$)	I_{FSM}	50	Amps
Operating & Storage Temperature Maximum Junction Temperature	T_{OP} & T_{STG} T_J	-55 to +150 +175	$^\circ C$
Maximum Total Thermal Resistance Junction to Case	$R_{\theta JC}$	8.5	$^\circ C/W$

SDA403:



Notes:

- 1/ For ordering information, Price, Operating Curves, and Availability- Contact Factory.
- 2/ Screening based on MIL-PRF-19500. Screening flows available on request.
- 3/ Unless Otherwise Specified, All Maximum Ratings/Electrical Characteristics @25°C.



Solid State Devices, Inc.

14701 Firestone Blvd * La Mirada, CA 90638

Phone: (562) 404-4474 * Fax: (562) 404-1773

ssdi@ssdi-power.com * www.ssdi-power.com

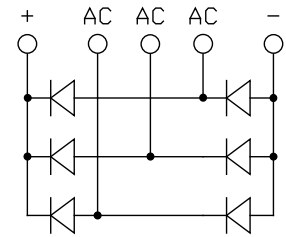
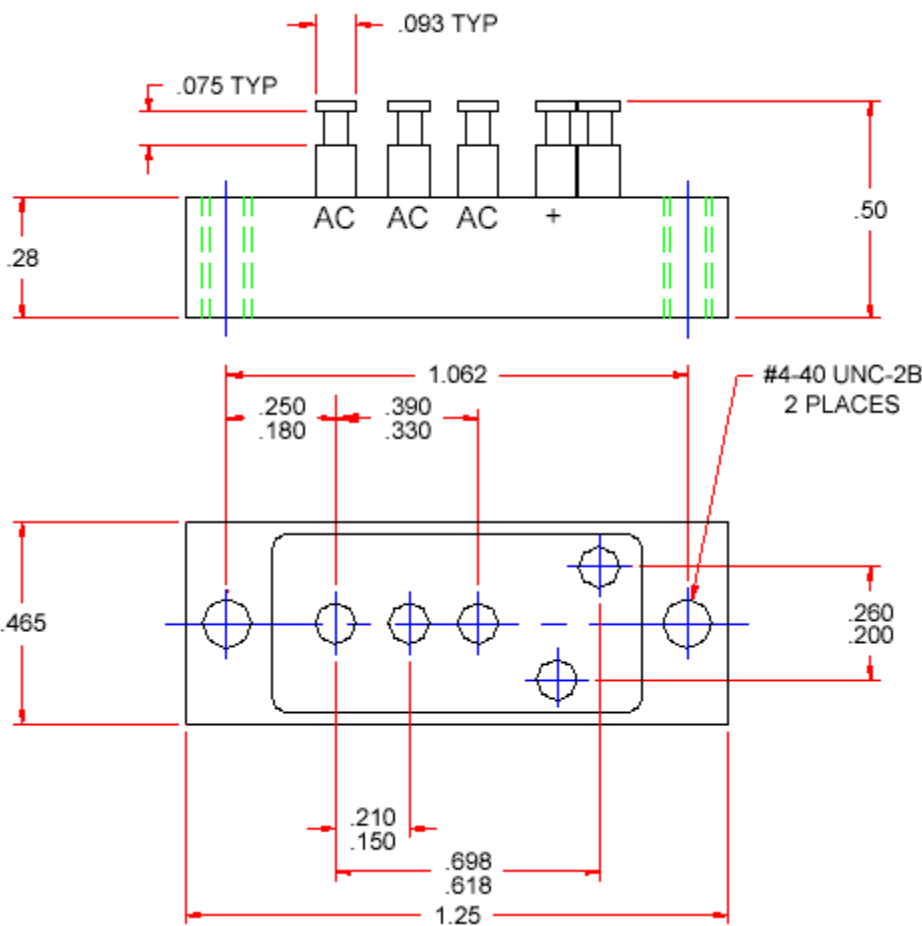
SDA403A

Thru

SDA403G

Electrical Characteristics (per leg) ^{3/}	Symbol	Max	Units
Instantaneous Forward Voltage Drop (300 – 500 μ sec pulse)	$I_F = 3A, T_A = 25^\circ C$ V_{F1}	1.2	V_{DC}
Reverse Leakage Current (Rated V_R , 300 μ sec pulse Minimum)	$T_A = 25^\circ C$ $T_A = 100^\circ C$ I_{R1} I_{R2}	3 100	μA
Reverse Recovery Time ($I_F = 500$ mA, $I_R = 1$ Amp, $I_{RR} = 250$ mA)	$T_A = 25^\circ C$ t_{RR}	5	μ sec

SDA403 CASE OUTLINE:



Tolerances: (Unless Otherwise Specified)
 .xx \pm .03"
 .xxx \pm .010"

NOTE: All specifications are subject to change without notification. SCDC's for these devices should be reviewed by SSDI prior to release.

DATA SHEET #: RA0005C

DOC