



**Solid State Devices, Inc.**

14701 Firestone Blvd \* La Mirada, Ca 90638  
 Phone: (562) 404-4474 \* Fax: (562) 404-1773  
 ssdi@ssdi-power.com \* www.ssdi-power.com

**SDA267A thru SDA267G**

**10 AMPS**  
**50 – 1000 VOLTS**  
**FAST RECOVERY**  
**SINGLE PHASE BRIDGE RECTIFIER**

**Designer's Data Sheet**

**Part Number/Ordering Information <sup>1/</sup>**  
**SDA267**

**Screening <sup>2/</sup>** = Not Screened  
 TX = TX Level  
 TXV = TXV

**Peak Inverse Voltage**  
 A = 50V, B = 100V, C = 200V, D = 400V  
 E = 600V, F = 800V, and G = 1,000V

- FEATURES:**
- Average Output Current 10 Amps
  - PIV 50 to 1000 Volts
  - Reverse Recovery Time 150 ns Max
  - Max Thermal Resistance 5.0°C/Watt
  - Hermetically Sealed Diode Cells
  - Turret Terminal
  - Aluminum Case
  - Available in Standard, Ultra Fast, and Hyper Fast versions - Consult Factory
  - TX and TXV Screening Available

**ELECTRICAL CHARACTERISTICS<sup>3/</sup>**

Part Number	Peak Inverse Voltage (per leg)	Sine Wave RMS Input Voltage Max.	Average DC Output Current		Average DC Output Current			Peak Forward Surge Current (1 Cycle)	Peak Repetitive Forward Current	Maximum Forward Voltage (per leg)	Maximum Reverse Current (per leg) @ PIV	
			$I_{F(AV)}$	$I_{F(AV)}$	$T_A = \text{Ambient Temp}$ (no heat sink)						$I_R$	$I_R$
Symbol	PIV	$V_r$	$I_{F(AV)}$		$I_{F(AV)}$			$I_{FSM}$	$I_{FRM}$	$V_F$	$I_R$	
Units	Volts	Volts	Amps		Amps			Amps	Amps	Volts	$\mu A$	
Conditions			55°C	100°C	25°C	55°C	100°C				25°C	100°C
<b>SDA267A</b>	50	35	10	6	4	3	1.7	125	60	1.2	2	50
<b>SDA267B</b>	100	70	10	6	4	3	1.7	125	60	1.2	2	50
<b>SDA267C</b>	200	140	10	6	4	3	1.7	125	60	1.2	2	50
<b>SDA267D</b>	400	280	10	6	4	3	1.7	125	60	1.2	2	50
<b>SDA267E</b>	600	420	10	6	4	3	1.7	125	60	1.2	2	50
<b>SDA267F</b>	800	560	10	6	4	3	1.7	125	60	1.2	2	50
<b>SDA267G</b>	1000	700	10	6	4	3	1.7	125	60	1.2	2	50

**NOTES:**

\* Pulse Test: Pulse Width = 300µsec, Duty Cycle = 2%

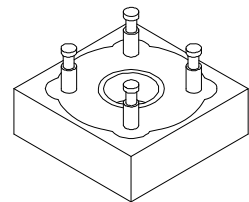
**NOTES:**

**1/** For Ordering Information, Price, Operating Curves and Availability- Contact Factory.

**2/** Screening based on MIL-PRF-19500. Screening flows available on request.

**3/** Unless Otherwise Specified, All Electrical Characteristics @25°C.

**SDA267**



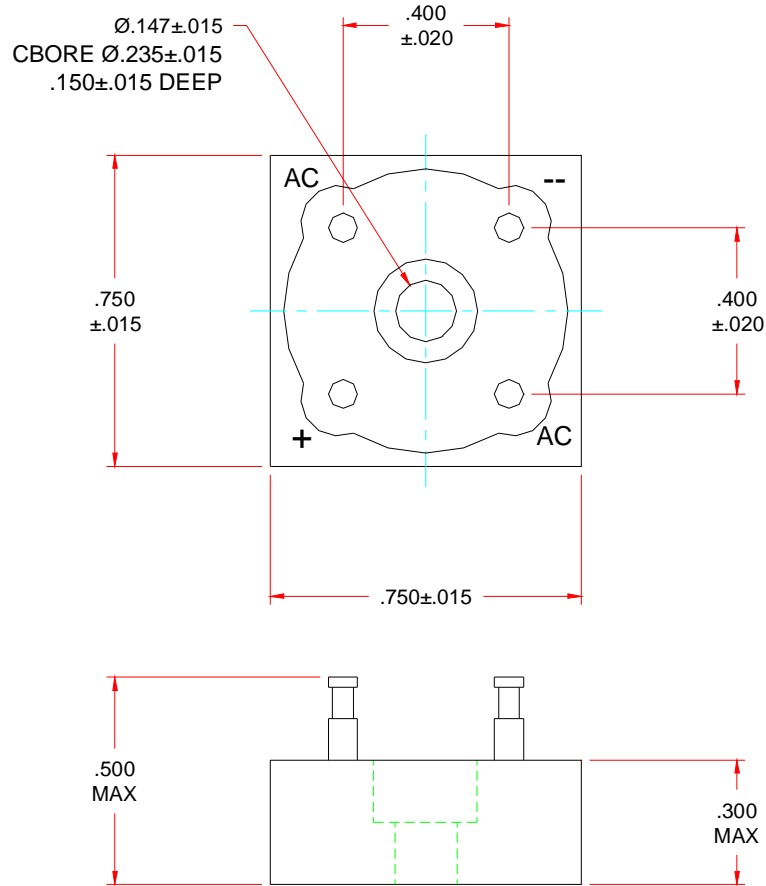


**Solid State Devices, Inc.**

14701 Firestone Blvd \* La Mirada, Ca 90638  
Phone: (562) 404-4474 \* Fax: (562) 404-1773  
ssdi@ssdi-power.com \* www.ssdi-power.com

**SDA267A thru SDA267G**

**PACKAGE OUTLINE: SDA267**



**NOTE:** All specifications are subject to change without notification. SCD's for these devices should be reviewed by SSDI prior to release.

**DATA SHEET #: RA0077B**

**DOC**