



Solid State Devices, Inc.

14701 Firestone Blvd * La Mirada, Ca 90638
 Phone: (562) 404-4474 * Fax: (562) 404-1773
 ssdi@ssdi-power.com * www.ssdi-power.com

SDA267AUF thru SDA267GUF

10 AMPS
50 – 1000 VOLTS
ULTRA FAST RECOVERY
SINGLE PHASE BRIDGE RECTIFIER

Designer's Data Sheet

Part Number/Ordering Information ^{1/}

SDA267

UF

L

Screening ^{2/}

— = Not Screened
 TX = TX Level
 TXV = TXV Level

Peak Inverse Voltage

A = 50V, B = 100V, C = 200V, D = 400V
 E = 600V, F = 800V, and G = 1,000V

- FEATURES:**
- Average Output Current 10 Amps
 - PIV 50 to 1000 Volts
 - Reverse Recovery Time 60-80 ns Max
 - Max Thermal Resistance 5.0°C/Watt
 - Hermetically Sealed Diode Cells
 - Turret Terminal
 - Aluminum Case
 - Available in Standard, Ultra Fast, and Hyper Fast versions - Consult Factory
 - TX and TXV Screening Available

ELECTRICAL CHARACTERISTICS ^{3/}

Part Number	Peak Inverse Voltage (per leg)	Reverse Recovery Time ^{4/} (per Leg)	Average DC Output Current		Average DC Output Current			Peak Forward Surge Current (1 Cycle)	Peak Repetitive Forward Current	Maximum Forward Voltage (per leg)	Maximum Reverse Current (per leg) @ PIV	
			$T_A = \text{Ambient Temp}$	$T_C = \text{Case Temp}$	$T_A = \text{Ambient Temp}$	$T_C = \text{Case Temp}$	$T_A = \text{Ambient Temp}$				$T_C = \text{Case Temp}$	$T_A = \text{Ambient Temp}$
Symbol	PIV	t _{RR}	I _{F(AV)}		I _{F(AV)}			I _{FSM}	I _{FRM}	V _{F @ 3A}	I _R	
Units	Volts	nsec	Amps		Amps			Amps	Amps	Volts	µA	
Conditions	25°C	25°C	55°C	100°C	25°C	55°C	100°C	25°C	25°C	25°C	25°C	100°C
SDA267AUF	50	60	10	6	4	3	1.7	75	60	1.4	20	1000
SDA267BUF	100	60	10	6	4	3	1.7	75	60	1.4	20	1000
SDA267CUF	200	60	10	6	4	3	1.7	75	60	1.4	20	1000
SDA267DUF	400	60	10	6	4	3	1.7	75	60	1.4	20	1000
SDA267EUF	600	60	10	6	4	3	1.7	75	60	1.4	20	1000
SDA267FUF	800	70	8	5	3.3	2.5	1.4	75	60	1.7	20	1000
SDA267GUF	1000	80	7.4	4.4	3	2.2	1.2	75	60	1.9	20	1000

NOTES:

* Pulse Test: Pulse Width = 300µsec, Duty Cycle = 2%

NOTES:

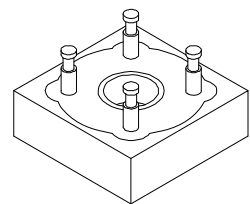
1/ For Ordering Information, Price, Operating Curves and Availability- Contact Factory.

2/ Screening based on MIL-PRF-19500. Screening flows available on request.

3/ Unless Otherwise Specified, All Electrical Characteristics @25°C.

4/ t_{RR} measured at I_F = 0.5A, I_R = 1A, I_{RR} = 0.25A, T_A = 25°C

SDA267



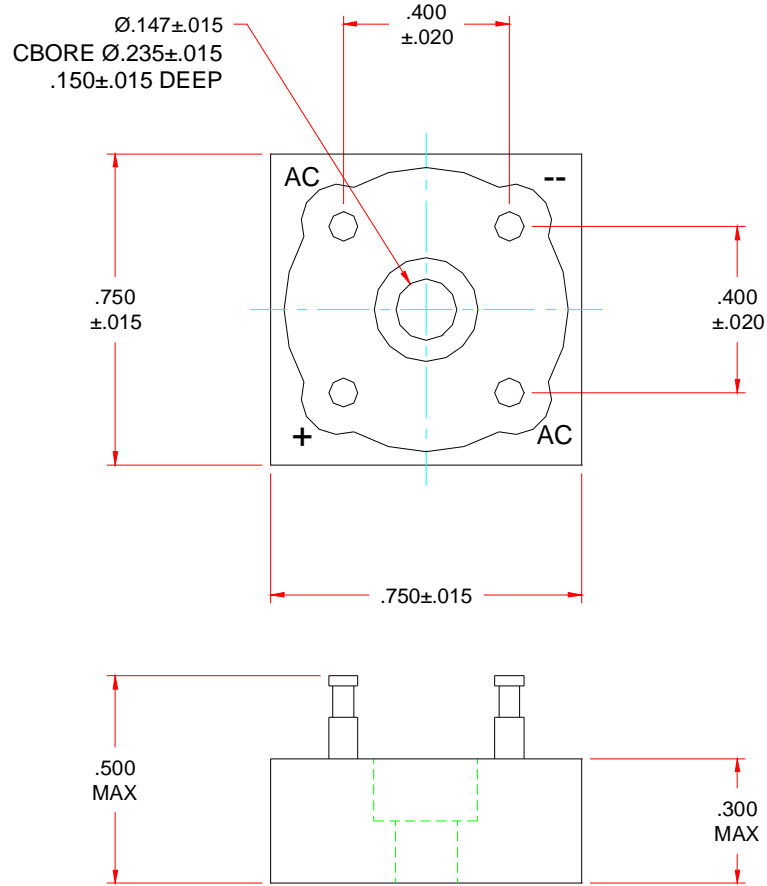


Solid State Devices, Inc.

14701 Firestone Blvd * La Mirada, Ca 90638
Phone: (562) 404-4474 * Fax: (562) 404-1773
ssdi@ssdi-power.com * www.ssdi-power.com

SDA267AUF thru SDA267GUF

PACKAGE OUTLINE: SDA267



NOTE: All specifications are subject to change without notification. SCD's for these devices should be reviewed by SSDI prior to release.

DATA SHEET #: RA0097A

DOC