



Solid State Devices, Inc.

14701 Firestone Blvd * La Mirada, Ca 90638
Phone: (562) 404-4474 * Fax: (562) 404-1773
ssdi@ssdi-power.com * www.ssdi-power.com

SSR5822 Series

3 AMP SCHOTTKY RECTIFIER 40 VOLTS

Designer's Data Sheet

Part Number/Ordering Information ^{1/}
SSR5822

 L **Screening ^{2/}**
 = Not Screened
 TX = TX Level
 TXV = TXV
 S = S Level

 L **Package Type**
 S.22 = SMD .22
 S.22T = Surface Mount Square Tab

- FEATURES:**
- Low Reverse Leakage
 - Ceramic Construction
 - For High Efficiency Applications
 - Available in Square Tab and surface mount Versions
 - TX, TXV, and S-Level Screening Available^{2/}
 - Alternative to 1N5822US

MAXIMUM RATINGS ^{3/}

RATING	SYMBOL	VALUE	UNIT	
Peak Repetitive Reverse Voltage and DC Blocking Voltage	V_{RRM}	40	Volts	
	V_{RWM}	40		
	V_R	40		
Average Rectified Forward Current (Resistive Load, 60Hz, Sine Wave)	I_o	3	Amps	
Surface Mount, $T_{EC} \leq 100^\circ C$				
Peak Surge Current (8.3ms pulse, half sine wave superimposed on I_o , allow junction to reach equilibrium between pulses, $T_A = 25^\circ C$)	I_{FSM}	100	Amps	
Operating Temperature Storage Temperature	T_J	-65 to +150	°C	
	T_{STG}	-65 to +175		
Thermal Resistance	Junction to End Tab for Surface Mount	$R_{\theta JE}$	10	°C/W

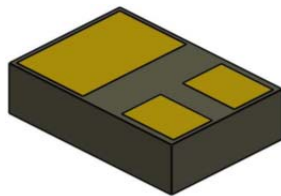
NOTES:

^{1/} For ordering information, price, operating curves, and availability - contact factory.

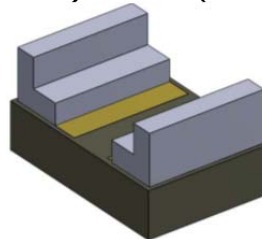
^{2/} Screening based on MIL-PRF-19500. Screening flows available on request.

^{3/} Unless otherwise specified, all electrical characteristics @25°C.

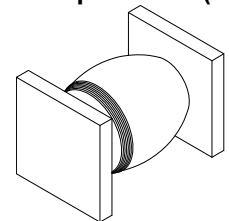
SMD.22 (S.22)



SM Square Tab (S.22T)



Replaces the Surface Mount Square Tab (SMS)



NOTE: All specifications are subject to change without notification. SCD's for these devices should be reviewed by SSDI prior to release.

DATA SHEET #: SH0088C

DOC



Solid State Devices, Inc.

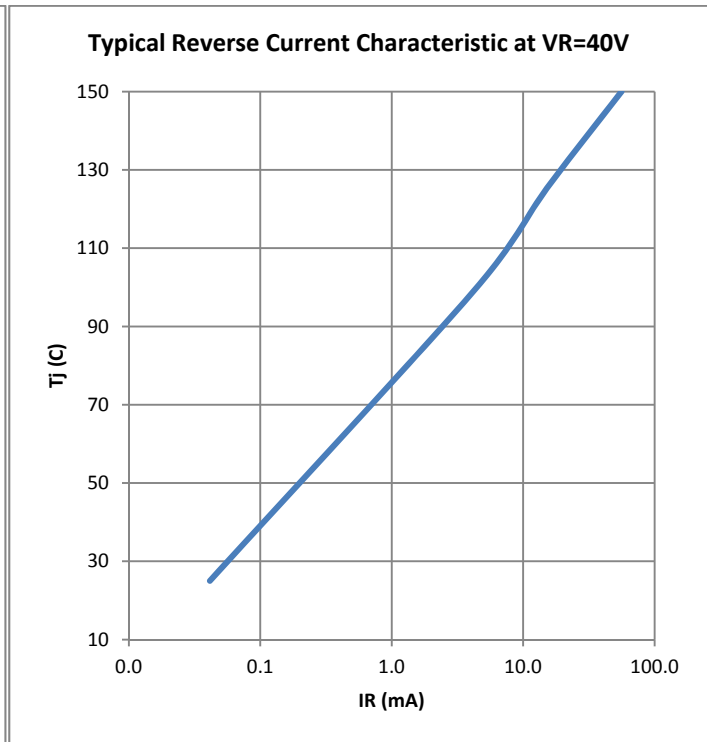
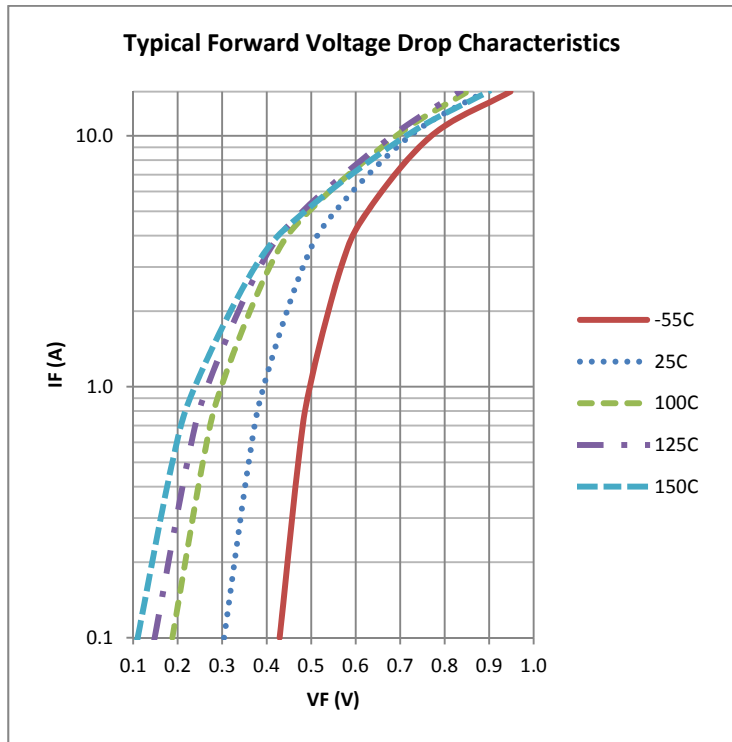
14701 Firestone Blvd * La Mirada, Ca 90638
 Phone: (562) 404-4474 * Fax: (562) 404-1773
 ssdi@ssdi-power.com * www.ssdi-power.com

SSR5822 Series

ELECTRICAL CHARACTERISTICS ^{3/}	SYMBOL	TYP	MAX	UNIT	
Instantaneous Forward Voltage Drop	$I_F = 1.0 \text{ A}, T_A = 25^\circ\text{C}$	V_{F1}	390	400	mV
	$I_F = 3.0 \text{ A}, T_A = 25^\circ\text{C}$	V_{F2}	480	500	
	$I_F = 9.4 \text{ A}, T_A = 25^\circ\text{C}$	V_{F3}	685	700	
	$I_F = 16.0 \text{ A}, T_A = 25^\circ\text{C}$	V_{F4}	835	-	
	$I_F = 3.0 \text{ A}, T_A = +100^\circ\text{C}$	V_{F5}	410	450	
	$I_F = 3.0 \text{ A}, T_A = -55^\circ\text{C}$	V_{F6}	560	610	
Reverse Leakage Current $V_R = 40 \text{ V}$	$T_A = +100^\circ\text{C}$	I_{R1}	70	100	μA
	$T_A = -55^\circ\text{C}$	I_{R2}	5	12.5	mA
		I_{R3}	0.03	1	mA
Junction Capacitance $V_R = 10 \text{ Vdc}, f = 1\text{MHz}$	C_J	175	250	pF	

NOTES:

- 1/ For ordering information, price, operating curves, and availability- contact factory.
- 2/ Screening based on MIL-PRF-19500. Screening flows available on request.
- 3/ Unless otherwise specified, all electrical characteristics @25°C.



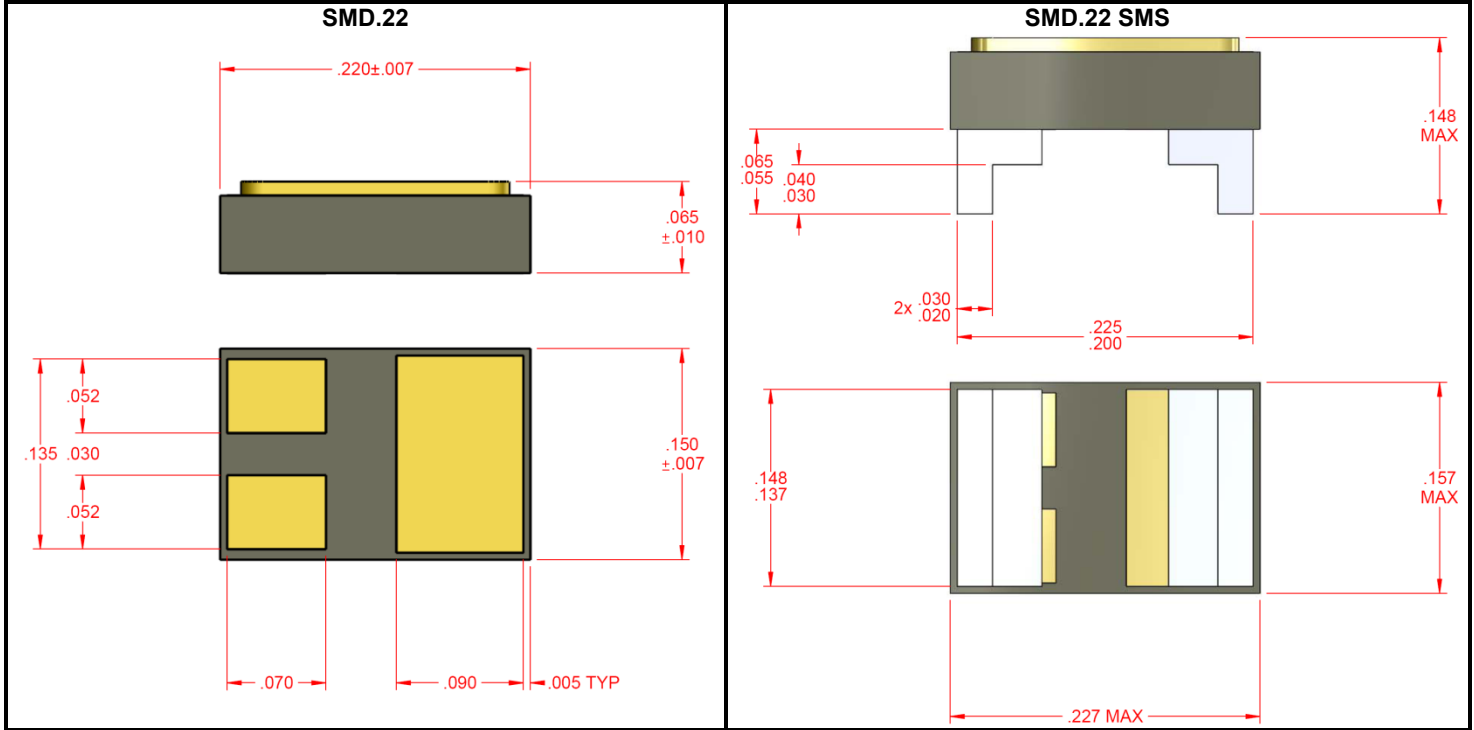


Solid State Devices, Inc.

14701 Firestone Blvd * La Mirada, Ca 90638
Phone: (562) 404-4474 * Fax: (562) 404-1773
ssdi@ssdi-power.com * www.ssdi-power.com

SSR5822 Series

Package Outlines:



NOTE: All specifications are subject to change without notification. SCD's for these devices should be reviewed by SSDI prior to release.

DATA SHEET #: SH0088C

DOC